

# Priming Assisted Centrifugal Pump



## Model PAH3A60C-B

Size 6" x 3"



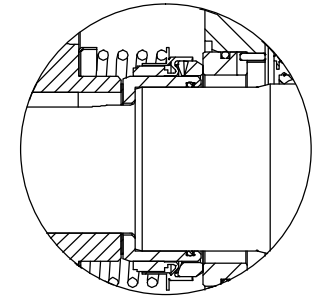
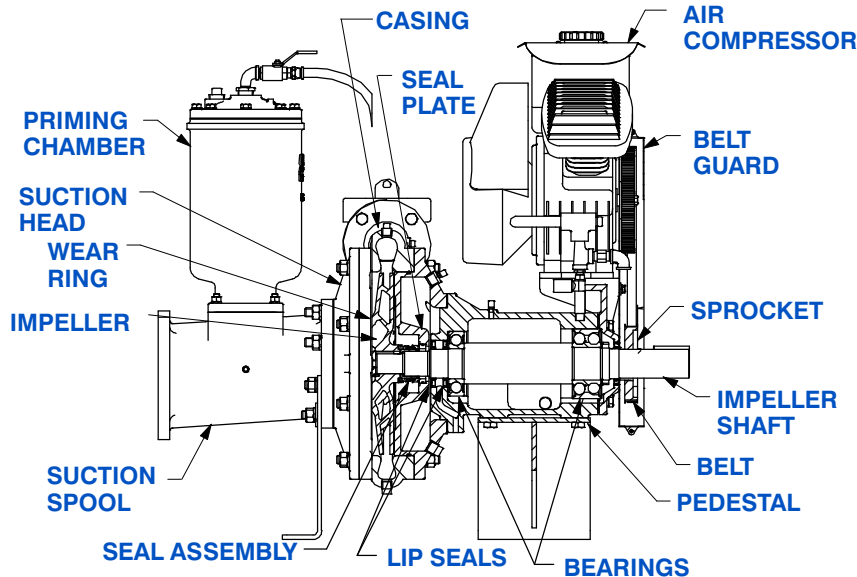
### PUMP SPECIFICATIONS

- Size:** 6" x 3" (152 mm x 76 mm) Flanged.
- Casing:** Ductile Iron 65-45-12.  
Maximum Casing Pressure 311 psi (2144 kPa).\*
- Maximum Operating Pressure 250 psi (1723 kPa) at Temperatures up to 100 F (37 C) Based on System Component Limitations.\*
- Enclosed Type, Five Vane Impeller:** Ductile Iron 65-45-12.  
Handles 1/2" (12,7 mm) Diameter Spherical Solids.
- Suction Head:** Ductile Iron 65-45-12.
- Suction Spool:** Gray Iron 30.
- Impeller Shaft:** Alloy Steel 4150M.
- Replaceable Wear Ring:** Ductile Iron 65-45-12.
- Pedestal:** Gray Iron 30.
- Seal Plate:** Gray Iron 30.
- Shaft Sleeve:** Stainless Steel 303/304.
- Priming Chamber:** Gray Iron 30 Housing w/Stainless Steel Float and Linkage.
- Discharge Check Valve:** Ductile Iron Housing with Welded Nickel Seat and Buna-N Flapper.
- Radial Bearing:** Open Single Ball.
- Thrust Bearing:** Open Double Ball.  
**Bearing Cavity Lubrication:** Lithium EP2 Grease.
- Gaskets:** Red Rubber and Buna-N.
- O-Rings:** Buna-N.
- Hardware:** Standard Plated Steel.
- Seal Cavity Oil Level Sight Gauges.**
- \* Consult Factory for Applications Exceeding Maximum Pressure and/or Temperature Indicated.
- Standard Equipment:** Belt Driven Air Compressor. Strainer.
- Optional Equipment:** Base. NPT Threaded Flange Kit. Coupling. TEFC Motor. Suction Vacuum and Discharge Pressure Gauge Kit.



**WARNING!**

Do not use in explosive atmosphere or for pumping volatile flammable liquids.



### SEAL DETAIL

Mechanical, SAE 30 Non-Detergent Oil-Lubricated. Silicon Carbide Rotating Face and Stationary Seat. Fluorocarbon Elastomers (DuPont Viton® or Equivalent). Stainless Steel 316 Cage and Spring. Maximum Temperature of Liquid Pumped 160°F (71°C).\*



GORMAN-RUPP PUMPS

www.grpumps.com

Specifications Subject to Change Without Notice

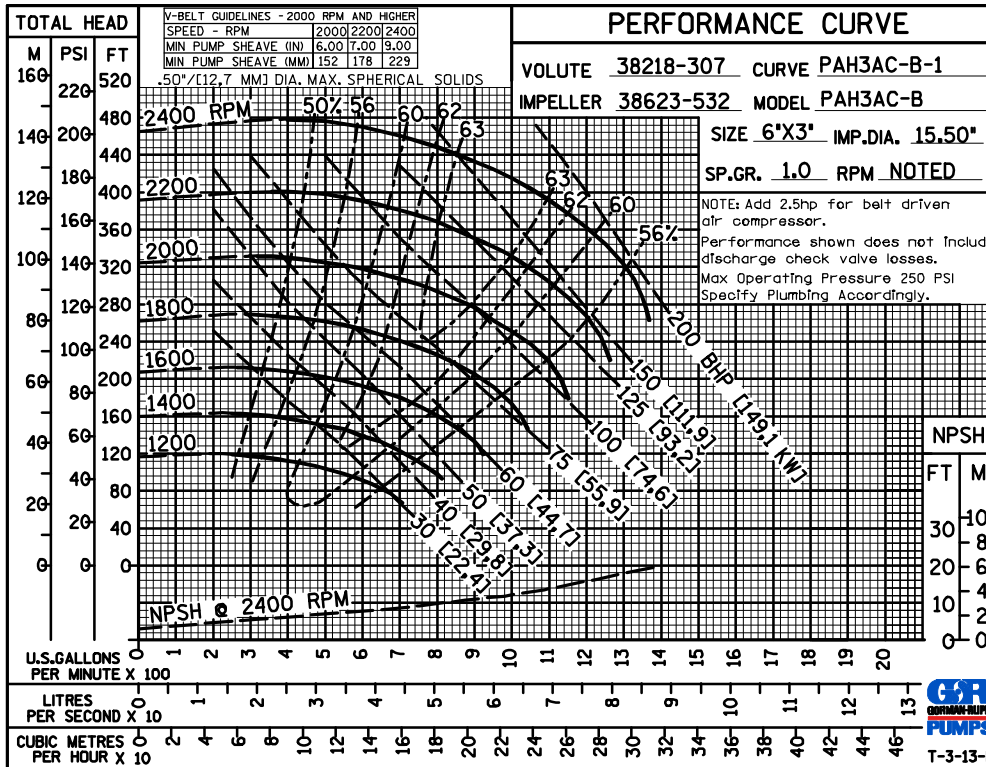
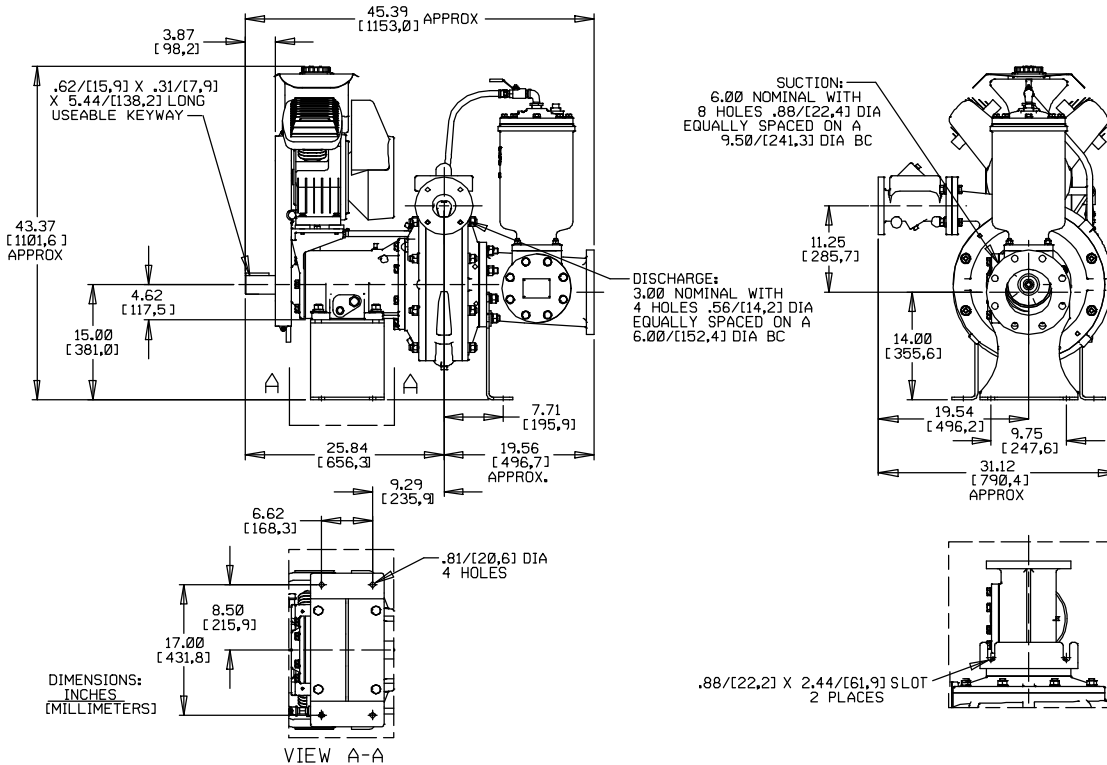
Printed in U.S.A.

**Specification Data**

SECTION 43, PAGE 110

APPROXIMATE  
DIMENSIONS and WEIGHTS

**NET WEIGHT:** 990 LBS. (370 KG.)  
**SHIPPING WEIGHT:** 1265 LBS. (472 KG.)  
**EXPORT CRATE SIZE:** 68 CU. FT. (1,9 CU. M.)



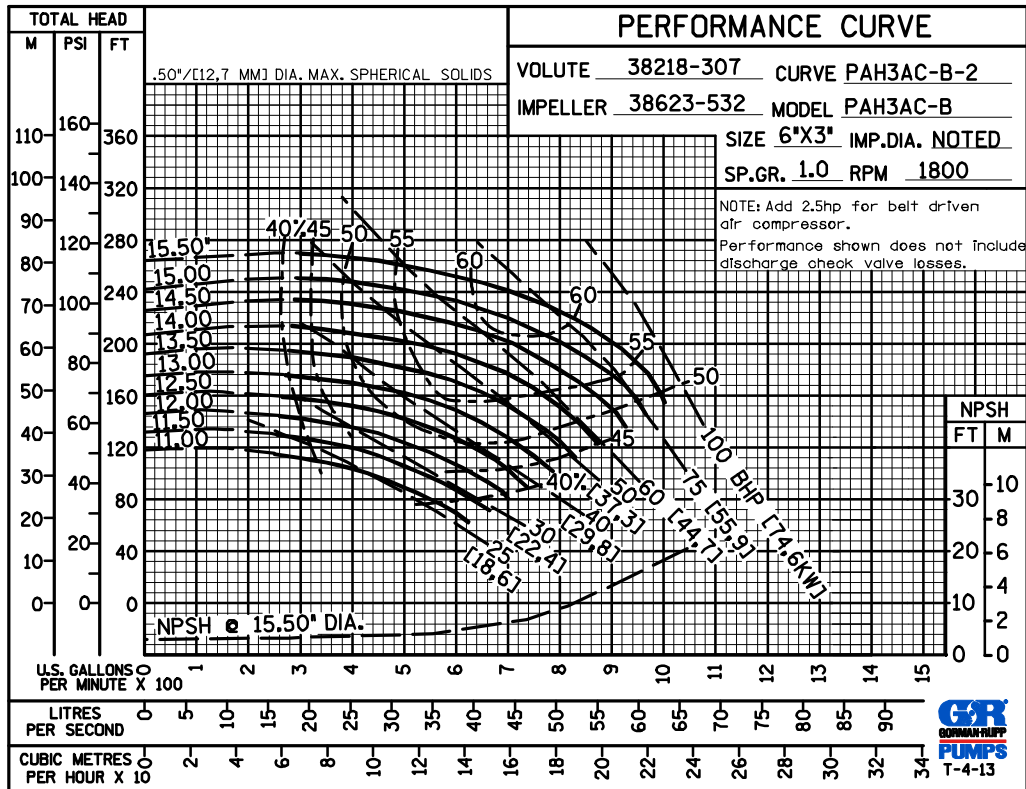
**GORMAN-RUPP PUMPS**

www.grpumps.com

Specifications Subject to Change Without Notice

Printed in U.S.A.

PERFORMANCE  
BASED ON  
WATER  
TRIMMED  
IMPELLER



GORMAN-RUPP PUMPS

www.grpumps.com

Specifications Subject to Change Without Notice

Printed in U.S.A.