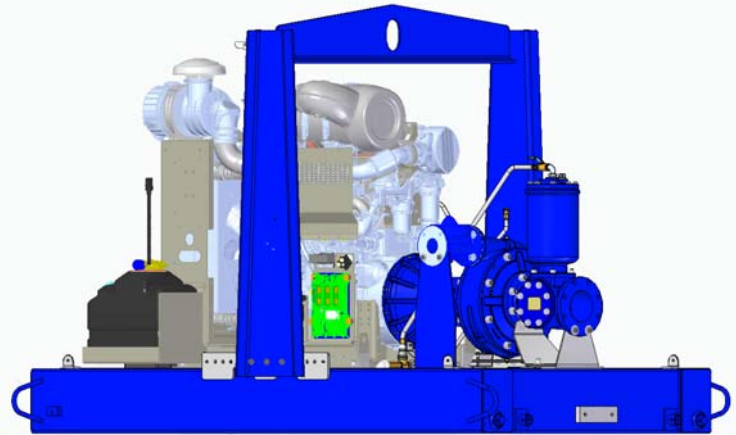




Priming Assisted Centrifugal Pump w/Autostart Model PAH3B60-4045H FT4 Size 6" x 3"



Total Head		Capacity of Pump in U.S. Gallons per Minute (GPM) at Continuous Performance			
P.S.I.	Feet				
126.1	291	390	350	350	350
121.3	280	540	635	635	635
104.0	240	555	755	870	870
86.7	200	555	760	930	990
69.4	160	555	760	934	1020
52.0	120	555	762	934	1030
34.7	80	555	770	935	1035
17.3	40	555	775	935	1040
Suction Lift		25'	20'	15'	10'



PUMP SPECIFICATIONS

- Size:** 6" x 3" (152 mm x 76 mm) Flanged.
- Casing:** Ductile Iron 65-45-12.
Maximum Operating Pressure 195 psi (1345 kPa).*
- Enclosed Type, Five Vane Impeller:** Ductile Iron 65-45-12.
Handles 1/2" (12,7 mm) Diameter Spherical Solids.
- Suction Head:** Ductile Iron 65-45-12.
- Suction Spool:** Gray Iron 30.
- Impeller Shaft:** Alloy Steel 4150M.
- Replaceable Wear Ring:** Ductile Iron 65-45-12.
- Pedestal:** Gray Iron 30.
- Seal Plate:** Gray Iron 30.
- Seal:** Mechanical, SAE 30 Non-Detergent Oil-Lubricated. Silicon Carbide Rotating Face and Stationary Seat. Fluorocarbon Elastomers (DuPont Viton® or Equivalent). Stainless Steel 316 Cage and Stainless Steel 18-8 Spring. Maximum Temperature of Liquid Pumped 160 F (71 C).*
- Shaft Sleeve:** Stainless Steel 303/304.
- Priming Chamber:** Gray Iron 30 Housing w/Stainless Steel Float and Linkage.
- Discharge Check Valve:** Ductile Iron Housing with Welded Nickel Seat and Buna-N Flapper.
- Radial Bearing:** Open Single Ball.
- Thrust Bearing:** Open Double Ball.
- Bearing Cavity Lubrication:** Lithium EP2 Grease.
- Gaskets:** Vegetable Fiber.
- O-Rings:** Buna-N.
- Hardware:** Standard Plated Steel.
- Seal Cavity Oil Level Sight Gauges.**

*Consult Factory for Applications Exceeding Maximum Pressure and/or Temperature Indicated.

Standard Equipment: Gear-Driven Air Compressor. Hoisting Bail. Combination Skid Base w/Fuel Tank [Full Feature Control Panel Single Ball Type Float Switch](#). **

Optional Equipment: Battery. Skid Drag Base Kit. NPT Threaded Flange Kit. Heated Priming Chamber Kit. Suction Vacuum and Discharge Pressure Gauge Kit. High Speed (55 MPH/89 KM/H) Single Axle Pneumatic-Tired Wheel Kit w/wo DOT-Approved Lights and Electric Brakes. [Tandem Axle Over-the-Road Trailer](#) (Meets DOT Requirements) Available w/Either Electric or Hydraulic Surge Brakes, Running Lights, Jack Stands and Safety Cables/Chains. Liquid Level Transducer.

**50 Ft. (15 m) Standard Length; Dual Switches and Alternate Cable Lengths Available From the Factory.

WARNING!

Do not use in explosive atmosphere or for pumping volatile flammable liquids.

ENGINE SPECIFICATIONS

- Model:** John Deere 4045HFC04.
- EPA Tier:** Tier 4.
- Type:** Turbocharged Four Cylinder, Diesel Engine w/Air Compressor.
- Displacement:** 276 Cu. In. (4,5 liters).
- Governor:** Electronic Isochronous.
- Lubrication:** Forced Circulation.
- Air Cleaner:** Dry Type.
- Fuel Tank:** 110 U.S. Gals. (416 liters).
- Full Load Operating Time:** 18.3 Hrs.
- Starter:** 12V Electric.
- Standard Features:** DOC/SCR Exhaust After-Treatment System and Weather Cap.
- Engine Control Features:** Padlockable Box with Throttle Control, Tachometer, Coolant Temperature, Oil Pressure, Voltage and Overstart Indicators/Shut-downs. Manual/Stop/Auto Keyswitch. Audible Start-up Warning Delay. Fuel Level Display/Alarm/Shut-down Electronic Fuel Level Sensor.

JOHN DEERE PUBLISHED PERFORMANCE:
Maximum Gross BHP (Continuous)
125 (93 kW) @ 2200 RPM



GORMAN-RUPP PUMPS

www.grpumps.com

Specifications Subject to Change Without Notice

Printed in U.S.A.

Specification Data

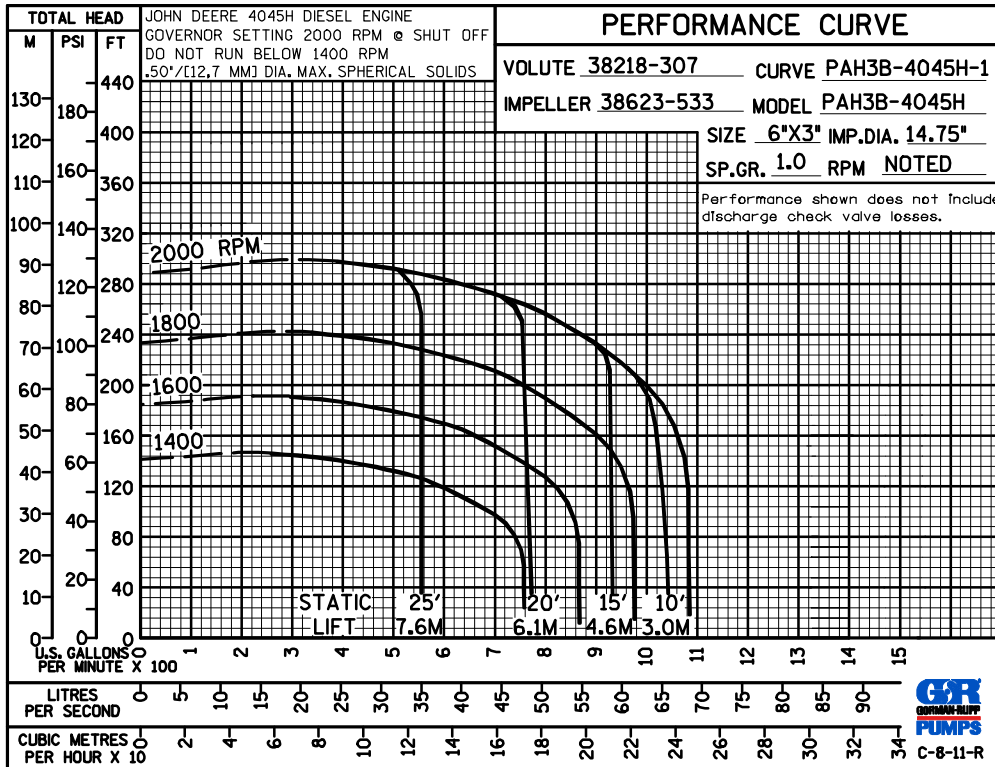
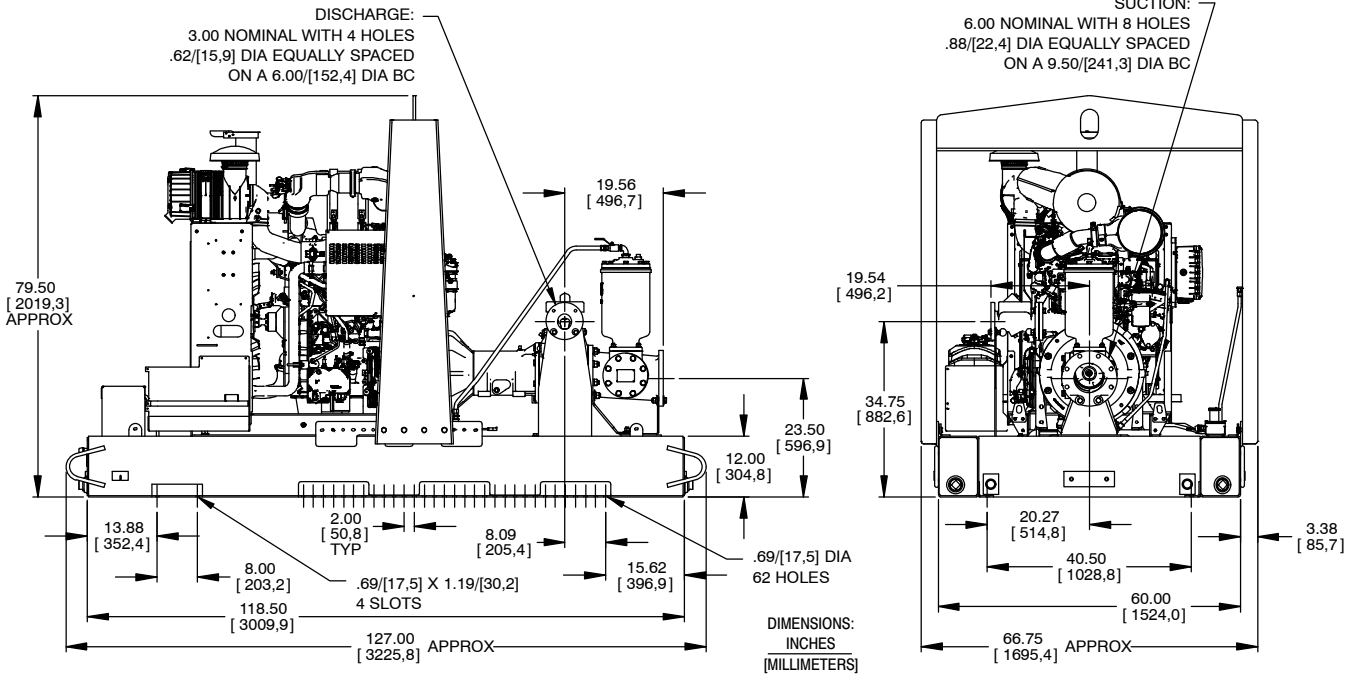
SECTION 43, PAGE 101

APPROXIMATE DIMENSIONS and WEIGHTS

NET WEIGHT:
SHIPPING WEIGHT:
EXPORT CRATE SIZE:

SKID BASE
4250 LBS. (1927,8 KG.)
4375 LBS. (1984,5 KG.)
453 CU. FT. (12,8 CU. M.)

POWERED BY: JOHN DEERE 4045H FT4 DIESEL ENGINE



GORMAN-RUPP PUMPS

www.grpumps.com

Specifications Subject to Change Without Notice

Printed in U.S.A.